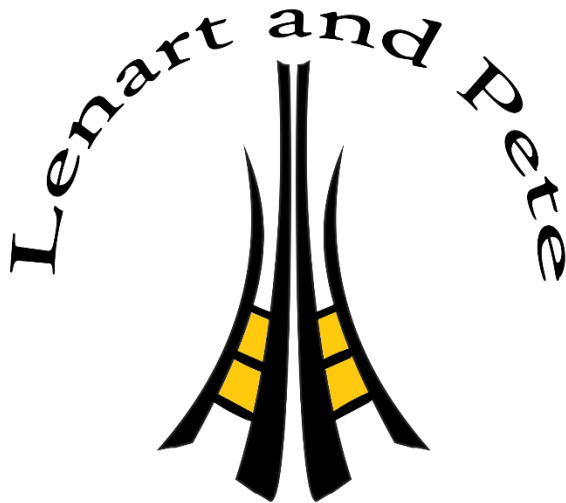


Lenart & Pete

Professional
Securities Account Management



L&P Securities Account Management

- The transparent investment -

Lenart and Pete Investment Company is an asset management company incorporated in the United States, operates under the laws and regulations of the United States. The company safely and successfully manages its own and its clients' capital for more than 20 years.



Who Is This Opportunity For?

- If you have a brokerage account but cannot be productive.
- If you do not have a brokerage account yet, but would like to profit from stock market trading, and you're worried that you won't be able to trade profitably or don't want to spend time learning how to do it.
- If you want to monitor the growth of your investment with your own eyes, as well as realize the results from all transactions immediately.



Trading results (from July to December 2024)

Here's your chance, you can benefit from the results of our trading strategy that guarantees exceptionally high returns, but without having to make your capital available to anyone. Simply open a securities account with a brokerage firm (Pepperstone is recommended) and deposit an amount equal to at least 110% of the current value of the Standard & Poor's

(S&P 500) stock index. We will manage the trading on your behalf. You will receive 55% of the total profit from closed positions, while the remaining 45% will serve as Lenart and Pete Investment's commission.

What Can L&P Investment Provide a Solution For?

- Pre-savings for your children/grandchildren (university studies, apartment purchase, etc.)
- Saving for retirement years
- Achieving a higher yield than is available from bank and government bonds
- Pre-savings for major investments near or far (property purchase, renovation)
- Raising the necessary capital to start the business
- Getting rid of the negative effects of inflation and exchange rate fluctuations
- Buying a car, traveling, vacationing, etc.

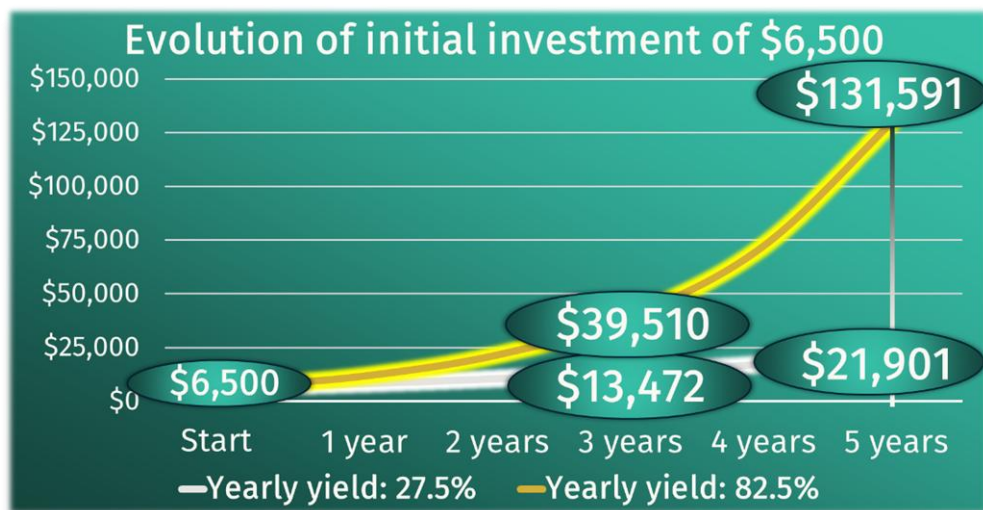
Steps

1. Open a securities account with the brokerage firm Pepperstone (pepperstone.com) that is completely independent of Lenart and Pete Investment. Pepperstone is a reputable and reliable company that offers competitive conditions.
2. Deposit an amount (in USD) equal to 110% of the current value of the Standard & Poor's 500 (S&P 500) stock index into the account.
3. Provide trading rights for us (this does not entitle Lenart and Pete Investment to raise or withdraw capital, only to open and close stock market positions).
4. On the 25th day of each month, based on the results of the positions closed since the last statement prepared by us, we prepare the statement for the last 1-month period for you, and you transfer the trading commission to us based on this.
5. Our contract is for an unlimited period of time, you can initiate its termination at any time.

Expected Yield

By seizing this new opportunity, investors can expect high returns of 27.5% to 82.5% per year, with an average result of 55%. This outstanding result outperforms all other forms of investment by showing exponential growth in the longer term.

In addition to recognizing the inherent risks of venture capital investments, Lenart and Pete Investment uses a carefully developed investment method to guarantee the safety of our clients' investments. This ensures a balance between potentially high returns and risk management.

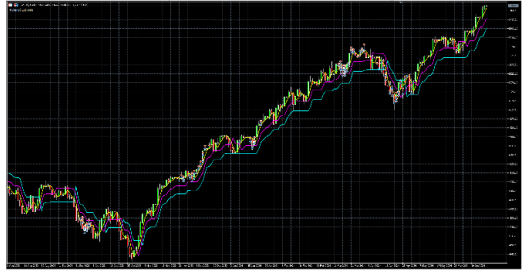


	Evolution of the initial investment of USD 6,500		How many times does the investment grow?	
	27.5%	82.5%	27.5%	82.5%
Start	\$6,500	\$6,500	1.00	1.00
1 yr	\$8,288	\$11,863	1.28	1.83
2 yrs	\$10,567	\$21,649	1.63	3.33
3 yrs	\$13,472	\$39,510	2.07	6.08
4 yrs	\$17,177	\$72,105	2.64	11.09
5 yrs	\$21,901	\$131,591	3.37	20.24

Example: Investment of \$20,000

Imagine you open an account with Admiral Markets with an initial deposit of USD 20,000 on the first day of the month. A position is opened on the 5th and closed on the 20th, yielding a profit of USD 1,000. Two days later, another position is opened, but it is not closed until the following month. On the 25th of the month, we provide a statement summarizing activity. Of the two positions, only the first is closed before 25th day of the month, generating a profit of USD 1,000. Therefore, only this profit serves as the basis for settlement.

As per the agreement, you are entitled to 55% of the profit, amounting to USD 550. Lenart and Pete Investment retains a commission of 45%, equivalent to USD 450. You may settle the commission in one of two ways: by



first transferring the USD 450 from your brokerage account to your personal account and then paying the commission, or by using external funds to directly pay the commission while leaving your brokerage account balance unchanged.

In the following month, after sharing your positive experience with friends, two of them decide to open their own securities accounts and entrust their management to Lenart and Pete Investment. As a result, your share of the profit increases by 0.5 percentage points for each new client, for a total increase of 1 percentage point. Starting next month, you will receive 56% of the total profit, while Lenart and Pete Investment's commission is reduced to 44%. For example, if the total profit for the next month is again USD 1,000, your share will amount to USD 560 (56% of USD 1,000), and you would transfer USD 440 (44% of USD 1,000) to Lenart and Pete Investment. This adjustment reflects your enhanced benefits as part of our Affiliate Program.

Q&A

1. *How much annual profit can I expect?*

We usually realize a return of 50-150% per year. After deducting the Lenart and Pete Investment commission (45%), the annual return you can achieve (55%) can be up to 27.5%-82.5%.

2. *How can I increase my share of total yield?*

If new clients join Lenart and Pete Investment through your recommendation and they also entrust us with the management of their accounts, then for each new client, your share of the total profit increases by 0.5 percentage point up to 60%.

3. *What products are included in the portfolio?*

Based on many years and decades of experience, we currently only use S&P 500 CFD during trading. It is both quite safe and quite profitable.

4. *Is there a maximum amount that can be invested?*

There is none, but your share of the total profit increases by 1 percentage point up to 60% for every \$100,000 managed.

5. *Can I get help opening an account?*

Yes, we will help you open an account online at a pre-arranged time, for which there is a one-time fee of USD 100.

6. *How can I pay the commission to Lenart and Pete Investment?*

Either transfer it from the brokerage account to your own account, and then to the account of Lenart and Pete Investment; or leaving the balance of the brokerage account unchanged, make the transfer directly from your own account – in the latter case, you can earn extra profit through compounding. You have 5 days after the day after settlement (25th of the month) to initiate the transfer, which must arrive in Lenart and Pete Investment's account by the 5th of the following month.

7. *When can I withdraw income/capital from my brokerage account?*

You can withdraw income from the account after settlement, capital only after prior consultation, but at any time. You must ensure that your account balance never falls below 110% of the current S&P 500 price.

8. *Is the realized yield tax-free?*

We do not deal with tax issues, please consult with an expert familiar with the provisions of your country. The commission paid to Lenart and Pete Investment can be included as an expense in the tax return.

9. *What happens in case of trade with loss?*

This cannot happen. The most important cornerstone of Lenart and Pete Investment's strategy is loss-free trading, so the profitability of our portfolio is guaranteed. We never close a portfolio with a loss, that is, there may be unprofitable positions in the portfolio, but their combined result is always positive. So, there can be no losses on the account, we carefully plan our portfolio, we do not conduct scalping trades within a day.

10. *What happens if you suffer a loss due to the brokerage firm's error?*

To prevent this, we suggest choosing a brokerage firm carefully (preferably one of those we recommend), because we cannot take responsibility for losses resulting from the brokerage firm's error.

11. *Can I open or close positions on my account?*

No. A strict condition for the smooth operation of our strategy is that only Lenart and Pete Investment initiates the opening and closing of positions. If you or a third party initiates such a transaction, this will result in the termination of the contract, and we will not be held responsible for any resulting damage.

Professional Expertise

Together, our team of portfolio managers and market analysts has more than 40 years of expert experience in successful securities trading and strategic planning. This extensive expertise underpins our reliability to deliver outstanding investment performance for our clients.



Lénárt Imre

Imre Lénárt and Gábor Pete jointly founded their company Lenart and Pete LLC. In the past 25 years, Imre Lénárt has taught mathematics and statistics, as well as economic and financial analysis and modeling at several domestic and foreign universities. He spent ten years



Pete Gábor

at leading US multinational financial companies (such as MSCI and Morgan Stanley) and at the Central Bank of Hungary as a senior statistical analyst. Gábor Pete has more than 20 years of experience in financial investment, business strategy and stock exchange trading. In the past, he was the lead advisor of several foreign private equity funds. As an excellent couple, the two of them can provide you with the most optimal investment.

Lenart and Pete Investment Company is committed to maximizing investment potential through strategic, safe and high yield methods. Join us to benefit from our proven expertise and the results of our investment strategies.

Requirements

- Minimum investment: 110% of the current value of S&P 500 index
- Minimum commitment: 1 month (unlimited expiry)

Contact

Phone: [+1\(929\)628-2848](tel:+1(929)628-2848)

Email: contact@lenartandpete.com

Web: lenartandpete.com/pages/securities_account_management/en